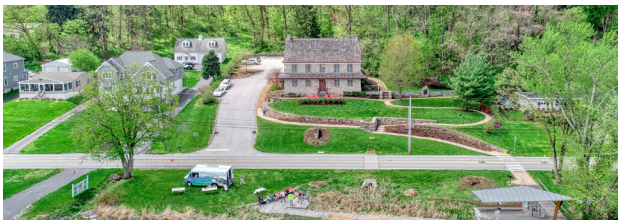


HERITAGE & ATTRACTIONS

- 19 Burning Bridge Diorama 124 Hellam St
- 20 Wrightsville Historical Museum 309 Locust St
- 21 Wrightsville Lime Kilns N. Front St
- 22 Zimmerman Center for Heritage TFB 1706 Long Level Rd



RECREATION & PARKS

- 23 Highpoint Scenic Vista 1199 Hilt Rd
- 24 Klines Run Park Long Level Rd
- 25 Lock 2 Recreation Area 2100 Fishing Creek Rd
- 26 Native Lands County Park 1706 Long Level Rd
- 27 Samuel S. Lewis State Park 6000 Mt. Pisgah Rd
- 28 Susquehanna Riverlands State Park Forge Lane
- 29 Vine Street Fields N. 3rd St
- 30 Wilton Meadows Nature Preserve Long Level Rd
- 31 Wrightsville Commons Park Walnut St
- 32 Wrightsville Riverfront Park Maple St

EXPLORE WRIGHTSVILLE

RESTAURANTS & SHOPPING

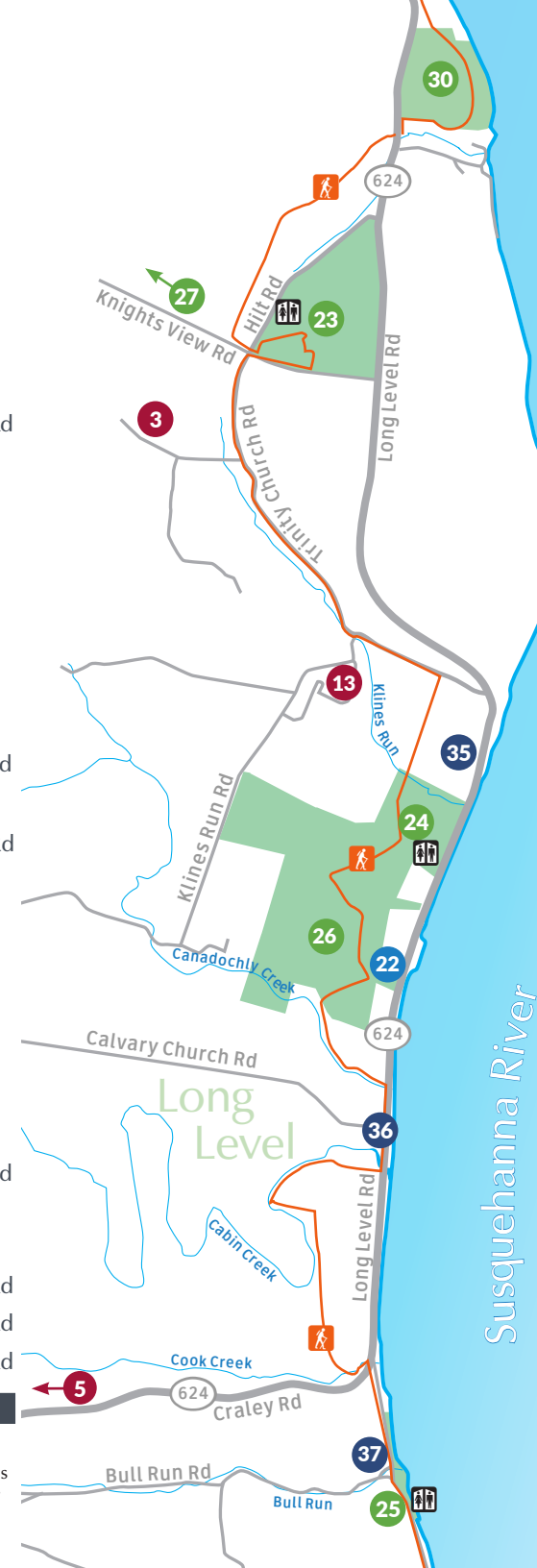
- 1 Burning Bridge Tavern 108 Hellam St
- 2 The Cycle Works Coffee House TFB 207 Hellam St
- 3 DiFrancesco Meadery 1237 Trinity North Rd
- 4 Flinchbaugh's Orchard & Farm Market TFB 110 Ducktown Rd
- 5 Flying Fibers TFB 280 Forge Hill Rd
- 6 Half Nuts Popcorn TFB 450 S. Front St
- 7 Hell in a Bucket Brewing 338 S. Front St
- 8 Hempzels South Alley
- 9 Jillybeans Sweet Shoppe South Alley
- 10 John Wright Restaurant TFB 234 N. Front St
- 11 Lehman's Roadside Market 529 Cool Spring Rd
- 12 Marcello's Pizza 500 Hellam St
- 13 Moon Dancer Winery, Cider House & Taproom 1282 Klines Run Rd
- 14 Rivertowne Restaurant 960 Hellam St
- 15 Sue's Food Market 214 Hellam St
- 16 Virtue Local Art Market TFB 481 E. Market St
- 17 Wild Batch Bistro 120 N. Fourth St
- 18 Wrightsville Pizza 203 Hellam St

OUTFITTERS & MARINAS

- 33 Cool Creek Golf Club (Public) 300 Cool Creek Rd
- 2 The Cycle Works TFB 207 Hellam St
- 34 Hake's Sporting Goods 100 Willow St
- 35 Lake Clarke Marina 1552 Long Level Rd
- 36 Long Level Marina 1809 Long Level Rd
- 37 Shank's Mare Outfitters TFB 2092 Long Level Rd

KEY

- Mason-Dixon Trail
- Public Road
- Public Restroom
- Trail-Friendly Business
Designated through the Trail Towns program to offer premier customer service to trail users



EXPLORE WRIGHTSVILLE



Wrightsville Borough is a historic town on the western shore of the Susquehanna River. In 1729, the first Europeans settled in what would become Wrightsville. The first ferry service between Columbia and York Counties was opened in 1730 by John Wright, a businessman and politician who a year earlier helped establish Lancaster County. The crossing was a throughfare for the many European settlers flooding into Pennsylvania’s frontier.

Wooden bridges replaced the ferry over time. On June 28, 1863, the Union Army famously burned the second of these bridges to deter advancement of the Confederate Army. Visit the Burning Bridge Diorama ¹⁹ and Wrightsville Historical Museum ²⁰ to learn about this historic event. Today, this quaint town commemorates the burning of the bridge each June during its annual Riverfest event.

Long Level is a long, flat area along the river, just south of Wrightsville Borough. It is a great spot for all kinds of watersports, including kayaking, sailing, and fishing.

Native Americans and early settlers alike valued this landscape as crossroads for land and water travel. One of the last known Susquehannock communities, dating to 1676, was on the hilltop that is now Native Lands County Park ²⁶. Learn about Native American heritage at SNHA’s Zimmerman Center for Heritage ²⁰, which is recognized by the National Park Service as a Visitor Contact Station for the Captain John Smith Chesapeake National Historic Trail.



Wrightsville, Long Level, and neighboring communities are connected by the Mason-Dixon Trail, which is over 200 miles in length. It connects the Appalachian Trail in Cumberland County, Pennsylvania with the Brandywine Trail in Chadds Ford, Pennsylvania, weaving through Maryland and Delaware along the way.

The Mason-Dixon Trail can be accessed in Wrightsville at Riverfront Park, in Long Level, or in the hills to the north or south of the borough. Look for the light blue blazes to start your adventure.



Before or after outdoor plans, visitors can indulge in the many cafes, restaurants, refreshing local libations, or small merchants that provide a range of services and products. Visitors can also take Route 462 to visit nearby communities, Hellam Township and Hellam Borough, featuring agritourism businesses, scenic drives, and historic sites.



Businesses in Trail Towns can become Trail-Friendly Businesses. These businesses offer premier customer service to trail visitors. You’ll find helpful amenities such as trail maps, public restrooms, and free wifi. They may have bicycle repair tools or an electronic charging station. Look for the Trail-Friendly Business symbol on the map to see which businesses are in the program.

WRIGHTSVILLE: A TRAIL TOWN



Wrightsville is a growing recreational hub and front door to communities along the Susquehanna River in York County. Situated on the river at the Veteran’s Memorial Bridge, also known as the Columbia-Wrightsville Bridge, the town and surrounding area boast an extensive trail network, state and county parks, access to recreational opportunities in Lancaster County, and more.

These assets led the York County Economic Alliance to welcome Wrightsville as one of seven Trail Towns in 2021. Additionally, Congress designated York and Lancaster Counties as the 55th National Heritage Area, known as the Susquehanna National Heritage Area. The friendly staff at the SNHA’s Zimmerman Center for Heritage provide visitors with information and directions to local recreational and historical experiences.

The York County Economic Alliance operates the Trail Towns Program. The Alliance’s goal is to help designated communities build vibrant towns, which meet the needs of visitors seeking a variety of recreational opportunities.

Learn more about the program and network of communities by visiting www.YorkCountyTrailTowns.com

Susquehanna National Heritage Area
Phone: 717-252-0229
www.SusqNHA.org

WRIGHTSVILLE



Susquehanna National Heritage Area advances a vision for Lancaster & York Counties as a place where people and communities cultivate their connections with each other, the landscape, and their history.



www.SusqNHA.org